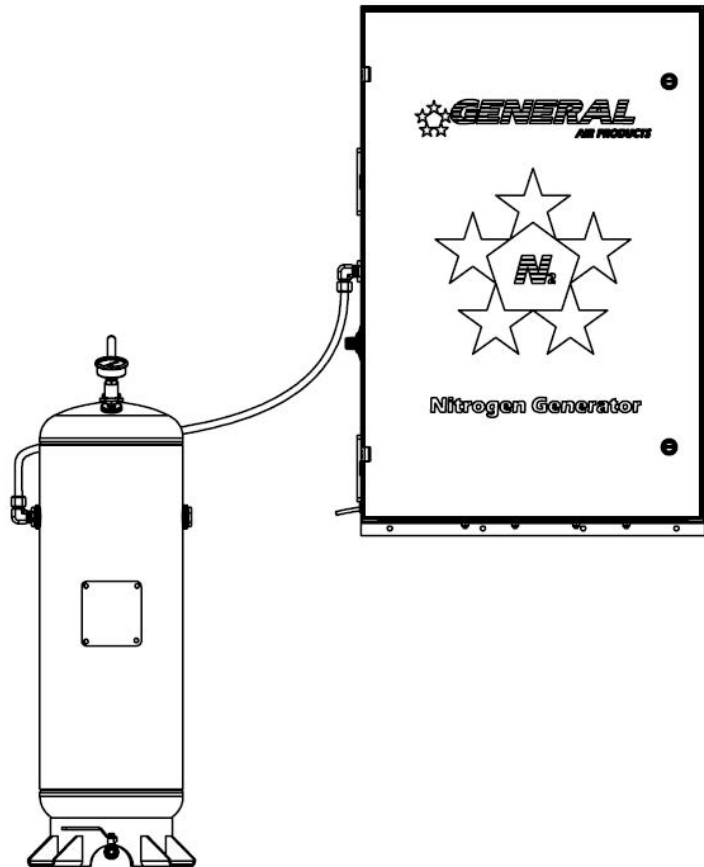




# Wall Mount Nitrogen Generators

NGP-WM300/ NGP-WM600

## Installation, Operation and Maintenance Manual



Call **1-800-345-8207**  
or visit our web site for our complete product listing  
**[www.GeneralAirProducts.com](http://www.GeneralAirProducts.com)**

Licensed for use under U.S. Patents 9,144,700, 9,186,533, and 9,610,466

CI222159  
REV: 4



# Table of Contents

Safety & Warnings .....	Section 1
System Overview .....	Section 2
Before Going To The Job Site .....	Section 3
Uncrating and Inspection .....	Section 4
Installation of Nitrogen Generator .....	Section 5
Wiring .....	Section 6
Standard Air Filling Method .....	Section 7
Nitrogen Filling Procedure .....	Section 8
Nitrogen Control Module .....	Section 9
Alarms/Troubleshooting .....	Section 10
Nitrogen Generator Leak Check Method .....	Section 11
Nitrogen Membrane Check .....	Section 12
Sprinkler System Leak Check .....	Section 13
Maintenance .....	Section 14
Normal Operating Parameters .....	Section 15
Nitrogen Analyzer Instructions .....	Section 16
Wiring Diagrams .....	Section 17
Technical Specifications and Drawings .....	Section 18
Warranty Policy .....	Section 19

If there are any questions regarding installation, operation, or maintenance of this Nitrogen Generator, please call 1-800-345-8207

**IMPORTANT: ALL INFORMATION SUBJECT TO CHANGE WITHOUT NOTICE.  
Consult factory for the most up to date version of this manual - 1-800-345-8207.**

# Section 1 - Safety & Warnings

---

This manual contains safety information that is important to know and understand. This information is provided for the safety of installers, operators, and users of the Nitrogen Generator. To help recognize this information, observe the following symbols.



Danger indicates an imminently hazardous situation which, if not avoided, WILL result in death or serious injury.



Warning indicates a potentially hazardous situation which, if not avoided, COULD result in death or serious injury.



Caution indicates a potentially hazardous situation which, if not avoided, MAY result in minor or moderate injury.



Notice indicates important information, that if not followed may cause damage to equipment or property.

## Important Notice to Users

The Installation and Owner's Manual supplied with each unit must be read thoroughly and completely understood before installation and operation of the Nitrogen Generator. All appropriate safety standards for handling of gases as determined by local or national laws and regulations should be followed at all times.

## Unpacking

After unpacking unit, carefully inspect all parts and equipment for any damage that may have occurred during transit. Make sure to tighten fittings, bolts, etc. before putting unit into service.



## General Safety Information

Important: Read all of the safety information in this manual before operating this equipment. Use of the equipment in a manner not specified within this manual may impair the protection provided by the generator and could result in an unplanned release of pressure, which may cause serious injury or damage. Only competent personnel, who have been trained, qualified, or approved by General Air Products should perform commissioning, servicing, and repair procedures. Call 800-345-8207 for details


When handling, installing, or operating this equipment, personnel must employ safe engineering practices and observe all related local regulations, health, and safety procedures, and legal requirements for safety.

Ensure that the equipment is depressurized and electrically isolated, before carrying out any of the scheduled maintenance instructions specified in this manual.

The warnings in this manual cover the most known potential hazards, but by definition cannot be all-inclusive. If the user employs an operating procedure, item of equipment, or a method of working that is not specifically recommended by General Air Products, the user must ensure that the equipment will not be damaged or become hazardous to persons or property.


Nitrogen is not a poisonous gas. However, in a concentrated form, there is a risk of asphyxiation. The generator produces a flow of nitrogen and oxygen enriched air which quickly disperses in the atmosphere. However, do not directly inhale the output gas from the outlet pipe.

The generator is classified as non-hazardous for transportation purposes and as non-flammable for fire regulations. This equipment is for indoor use only. Do not operate outdoors.

 <b>WARNING</b>
Operation of the nitrogen membrane separator above the rated design pressure may be hazardous. Do not connect it to compressed air sources that can exceed its maximum rated pressure without installing appropriate pressure controls and safety relief devices in the compressed air supply line.

Specific procedures must be developed for maintenance of the equipment on which the membrane separator is located. Appropriate labels must be continuously displayed in all areas where personnel might be exposed to a nitrogen atmosphere under normal or upset condition.

 <b>NOTICE</b>
Do not attempt to disassemble the nitrogen membrane separator. Equipment damage may occur and cause the system to function incorrectly.

 <b>WARNING</b>
<b>This product can expose you to chemicals including Cumene, which is known to the State of California to cause cancer and birth defects or other reproductive harm. For more information go to <a href="http://www.P65Warnings.ca.gov">www.P65Warnings.ca.gov</a></b>

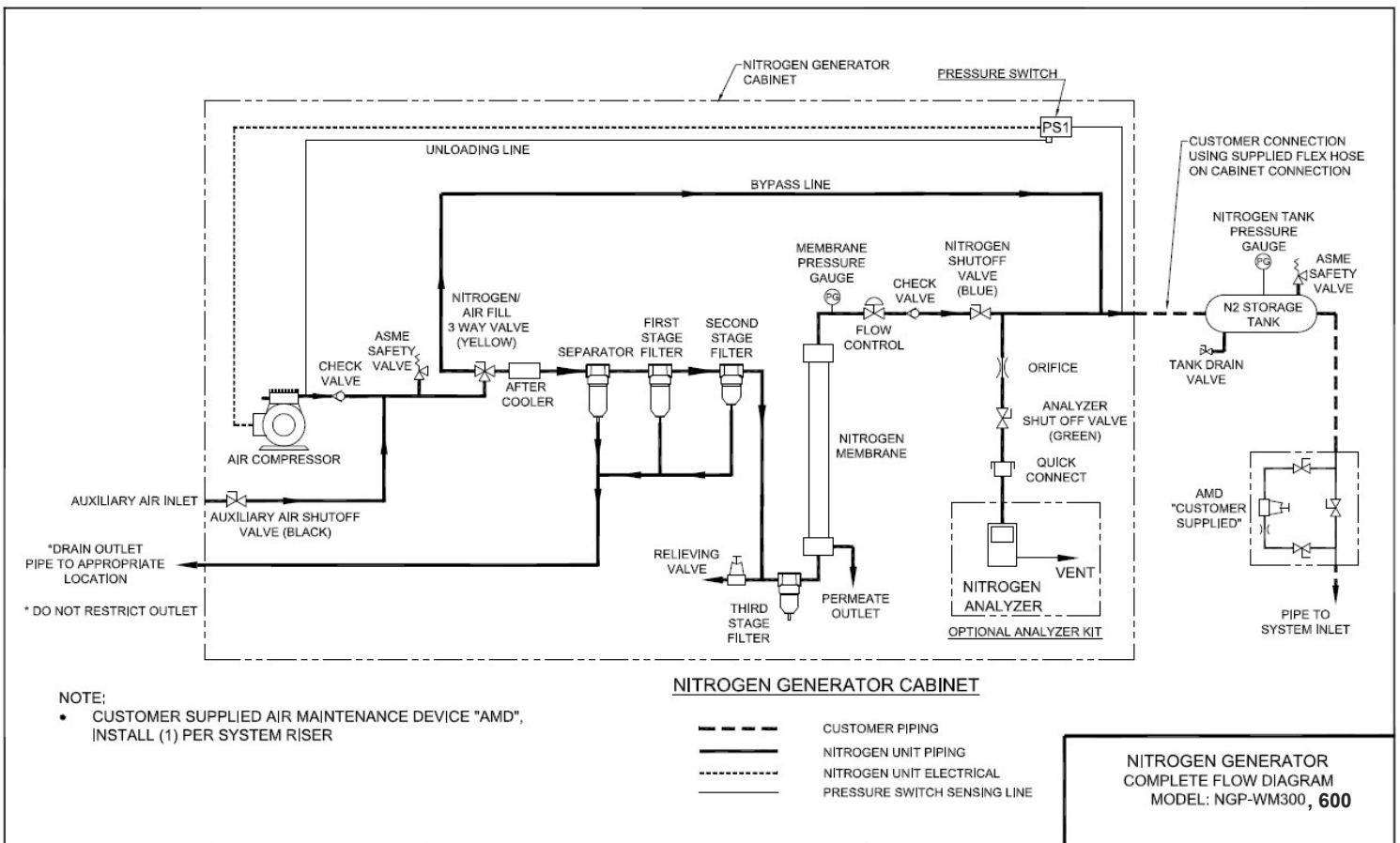
# Section 2 - System Overview

The Nitrogen Generator operates using membrane technology. The smaller oxygen and water vapor molecules can pass through (permeate) the membrane quickly. The larger nitrogen molecules are less likely to diffuse through the separator tubes; therefore, they continue downstream to the separator outlet. The permeated molecules are discharged to the atmosphere through a vent in the separator casing.

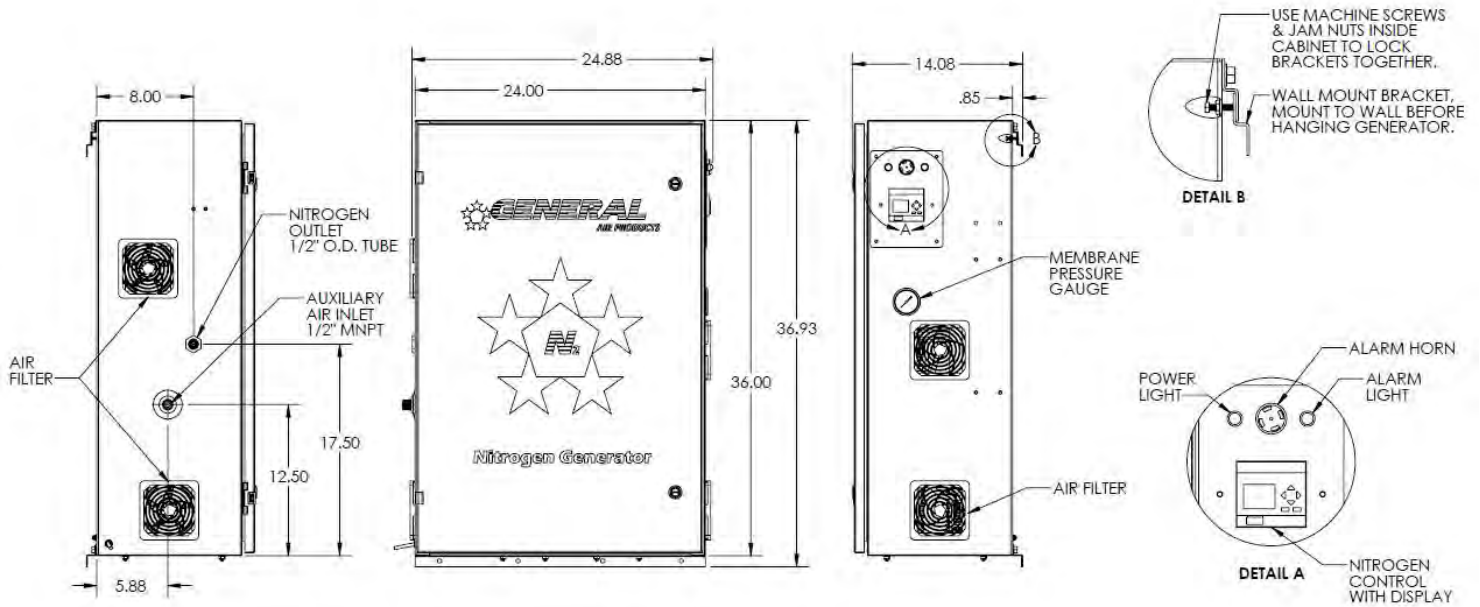
The Nitrogen Generator is specifically designed to provide clean, dry, high purity nitrogen for use in fire protection sprinkler systems. The generator is a fully assembled package ready to be connected to a new or existing fire sprinkler system using a factory pre-engineered air compressor. These turn-key systems include all air filtration equipment required to keep the generator operating at peak efficiency.

Product Designation	Outlet Pipe Connection, NPS	Sprinkler System Capacity (Gallon)	Bypass Capacity (Gallon)
NPG-WM300, 60 HZ	1/2	1275	300
NGP-WM600, 60 HZ	1/2	3880	520
NPG-WM300, 50 HZ	1/2	1275	255
NGP-WM600, 50 HZ	1/2	3880	482

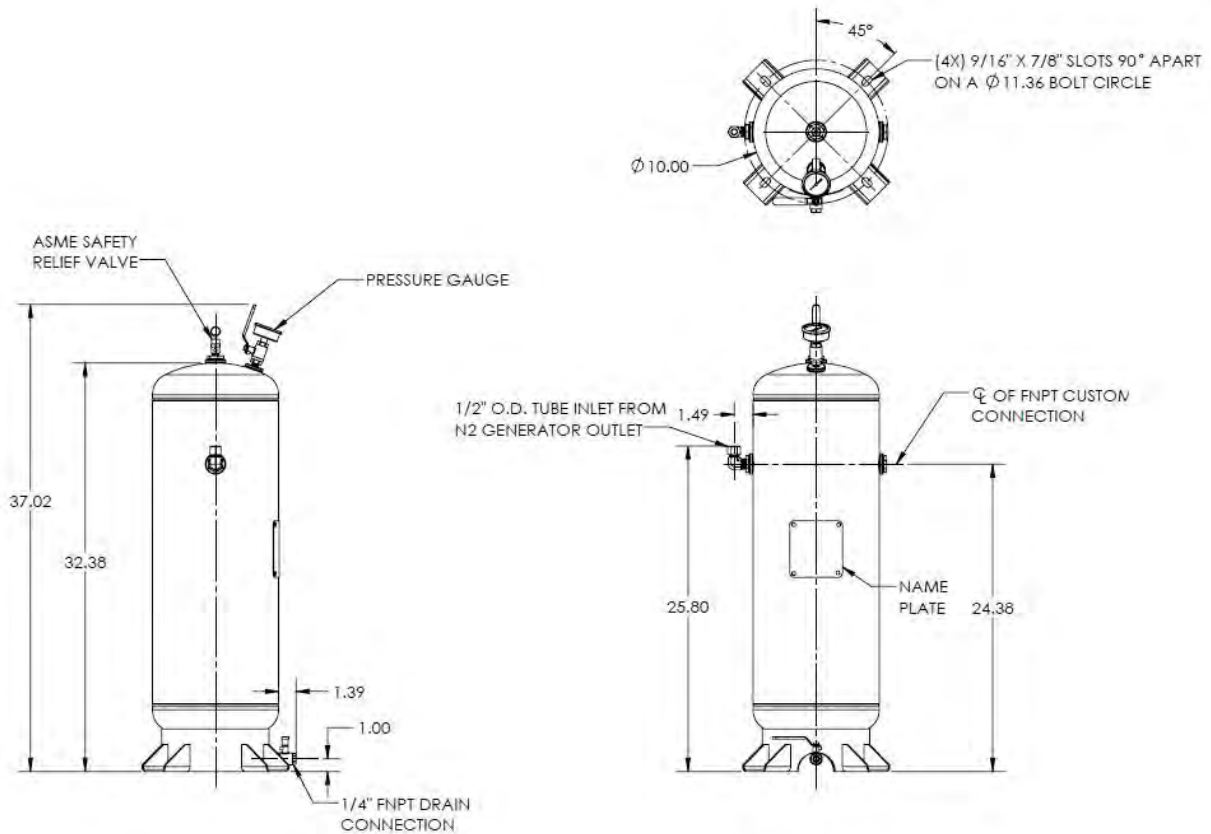
NGP-WM300, 600 Flow Diagram



# Typical External View NGP-WM300, 600

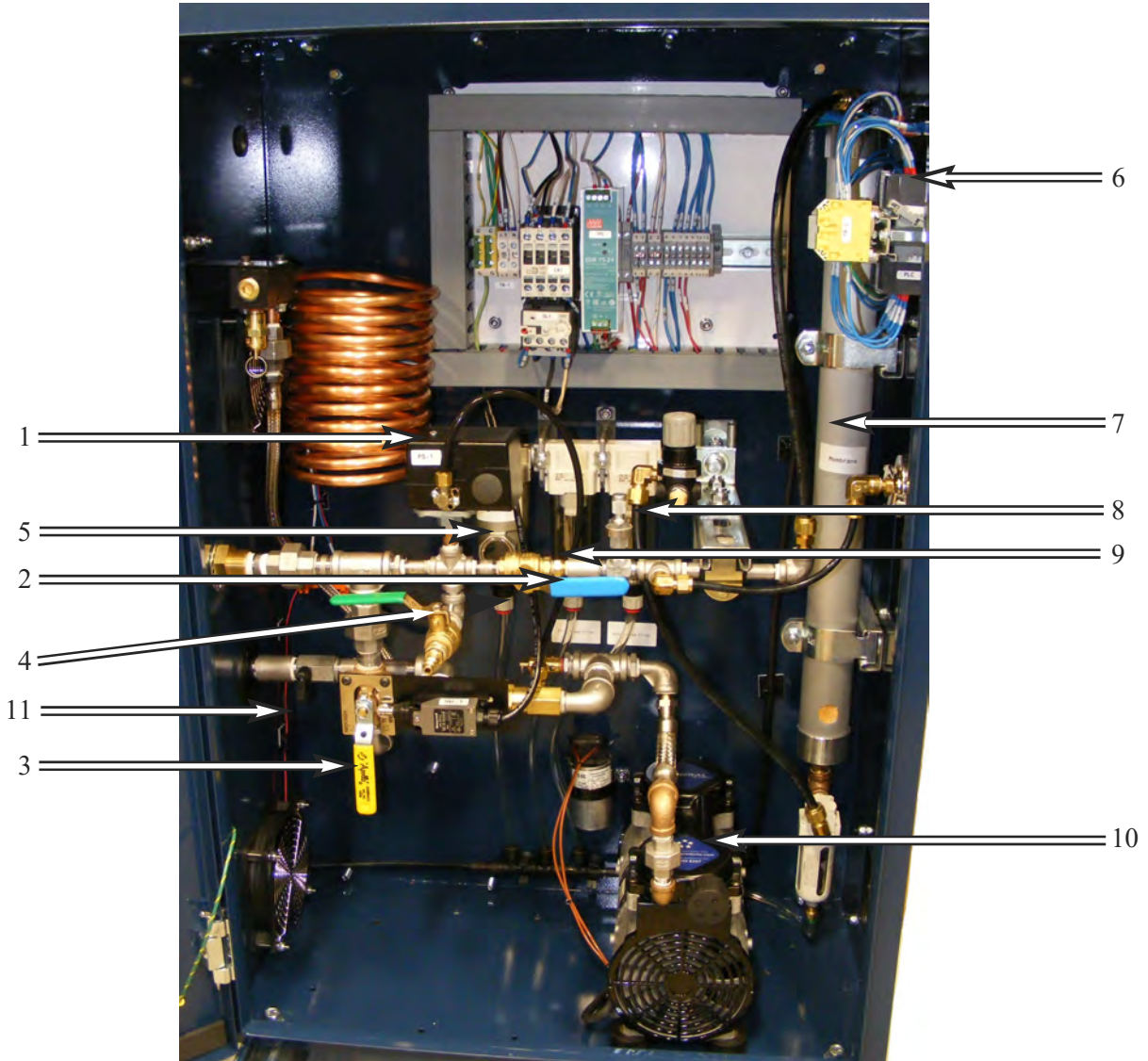


# Ten Gallon Vertical Receiver Tank





**Typical Internal View NGP-WM300  
(NGP-WM600 is similar with a  
larger compressor.)**



- |                             |                               |
|-----------------------------|-------------------------------|
| 1. Pressure Switch          | 6. Nitrogen Control Panel     |
| 2. Nitrogen Outlet Valve    | 7. Nitrogen Membrane          |
| 3. Nitrogen/Air Fill Valve  | 8. Coalescing Filter          |
| 4. Nitrogen Test Port Valve | 9. 5 Micron Filter            |
| 5. Separator                | 10. Air Compressor            |
|                             | 11. Auxiliary Air Inlet Valve |



## Section 3 - Before Going To The Job Site

1. Find a location for the nitrogen generator to be installed meeting these requirements:

Dry, clean, and well-ventilated	
Ambient temperatures above 50°F at all times	
Access to front for service	
20" clearance on both sides for airflow	
Conveniently located near fire sprinkler system connections	
Conveniently located near drain	

### WARNING

The Nitrogen Generator creates a 30% to 40% oxygen stream which may pose a flammability problem in an oxygen-sensitive environment. Pipe per installation requirements and ensure the area surrounding the nitrogen generator is adequately ventilated. The Nitrogen Generator should always be installed in an adequately ventilated room. Nitrogen is nontoxic and largely inert. Rapid release of nitrogen gas into an enclosed space displaces the oxygen and can cause an asphyxiation hazard. Inhalation of nitrogen in excessive concentrations can result in unconsciousness without any warning symptoms.

2. Run a dedicated electrical circuit with an electrical disconnect switch to sprinkler room.

**NOTE:** The Wall Mount Nitrogen Generators operate at the same voltage but different amperage.

The model number may be followed by a -H or -V (horizontal or vertical tank), and may be followed by a -G for alternate membrane.

Model	Phase	Amperage	Voltage/Hz.	Maximum Circuit Breaker Size (Amps)
NGP-WM300-1A	SINGLE	6.5	115/60	15
NGP-WM600-1A	SINGLE	9.9	115/60	25
NGP-WM300-3A	SINGLE	3.3	208-230/60	15
NGP-WM600-3A	SINGLE	5.1	208-230/60	15
NGP-WM300-6A	SINGLE	3.3	220/50	15
NGP-WM600-6A	SINGLE	5.1	220/50	15

# Section 4 - Uncrating and Inspection

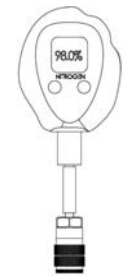
1. On arrival, do a full inspection by checking all packages and crates in the shipment for damage. If damage is found, sign for the damage or refuse the shipment. Contact the carrier immediately and file a shipping damage claim with the carrier.
2. Check to ensure all components are contained and no visible damage has occurred during shipping.



## CAUTION

Important: Read all of the safety information in this manual before installing or operating this equipment.

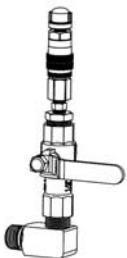
### Crate Checklist:



NGP-PSN2

Nitrogen cabinet	
Nitrogen storage tank	
Nitrogen membrane (inside cabinet)	
Manual (inside cabinet)	
1/4" x 10' condensation drain tube	
1/2" x 10' nylon tubing with compression fittings	
Nitrogen Analyzer (NGP-PSN2)	
Wall Mount Bracket	
Vibration Pads (4 pcs.)	
Flex Hose 1/2 x 30"	

3. Each nitrogen generator requires a minimum of one Air Maintenance Device (AMD), and one purge valve or analyzer port per system. Check to see these components have arrived.



NGP-PV-1

### Accessories

Air Maintenance Device AMD-1 (One per riser)	
Nitrogen Purge Valve (NGP-PV-1)	



AMD-1

### Required Items Supplied by Sprinkler Contractor

Anchor bolts (5/16" Diameter)	
NPT piping from generator to system (1/2" or greater)	
Dedicated electrical circuit with electrical disconnect	
1/4" drain tubing and connector if more than 10 ft. is needed	
1/2" ball valve for isolation	

## Section 5 - Installation of Nitrogen Generator

### 1. **Wall Mounting Instructions:**

Mount the top cabinet mounting bracket to the wall making sure that it is level. Lift the generator with attached mounting bracket and insert into wall mount bracket. Tighten bolts inside cabinet to clamp onto wall mount bracket. Secure the unit to the wall using 5/16" diameter bolts. Bolt the vertical tank directly to the floor utilizing the four slots shown on page 34.

### **Floor Mounting Instructions:**

To mount the generator to the floor: Anchor the unit to a level surface using the 3/8" diameter holes in the bottom of the cabinet, and the vibration mounting pads supplied

### **Tank Mounted Cabinet:**

The generator cabinet can be mounted directly to the horizontal tank as shown on page 35. Bolt the tank to the floor with the vibration isolators placed under the horizontal tank.

2. Install a 1/2" ball valve at the nitrogen storage tank outlet connection. The nitrogen storage tank comes with a 1/2" female NPT connection located on one side and a 1/2" compression fitting on the other side. Install the 1/2" hose with compression fittings onto the cabinet outlet tank connection. Install the other end of the hose to the nitrogen storage tank.

3. Close the 1/2" ball valve.

4. Install 1/2" NPT piping from 1/2" ball valve on the nitrogen storage tank to the sprinkler system Air Maintenance Device using standard accepted installation practices. The provided flex hose can be used to prevent excess vibration transmission to piping.

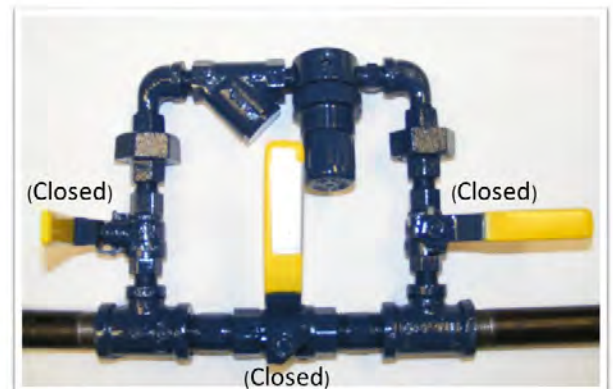
5. Pipe the drain tube on the bottom of the nitrogen cabinet to drain.  
NOTE: Tubing will need to be restrained as air pressure from the drain valve may cause the tubing to be displaced from the drain.

6. Install 1/2" NPT pipe (or larger) from the Air Maintenance Device (AMD) to the sprinkler system using standard accepted installation practices. Additional system components may be required.



Compression Fitting

NPT Connection



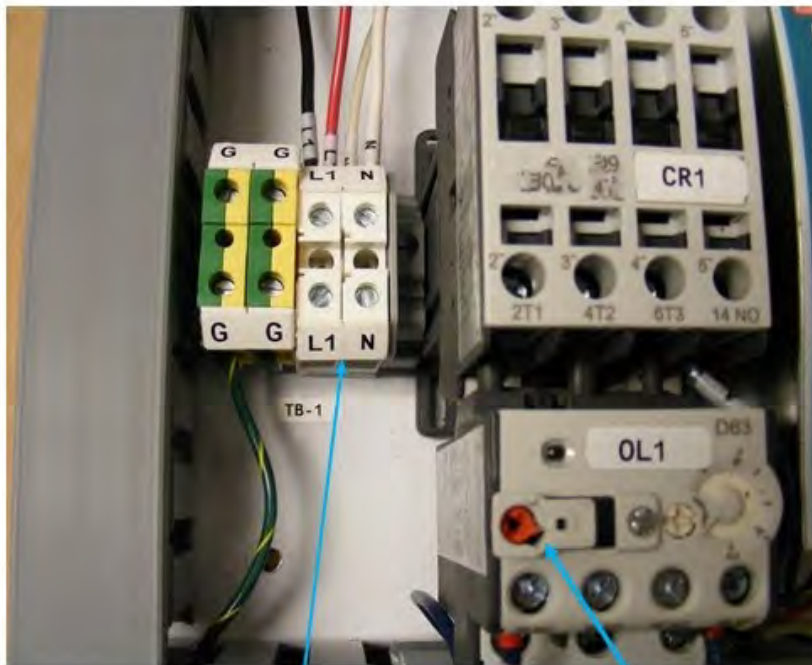
NOTE: AMD shown in closed position

7. Install ½" NPT pipe (or larger) from the Auxiliary Air Inlet to Auxiliary compressor if required. The auxiliary air compressor must have a pressure switch set to cut out at 60 psi or lower.

## Section 6 - Wiring

---

All wiring should be performed by a licensed electrician and conform to NEC and all applicable local standards. For wiring instructions refer to the Wiring Diagram. Wiring location is in the nitrogen cabinet.

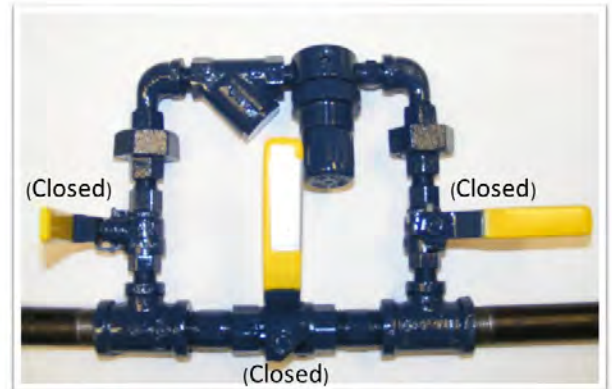


Customer  
connections

Overload Reset  
Button

## Section 7 - Standard Air Filling Method

1. Before beginning, make sure the water supply to the sprinkler system is turned off and sprinkler piping has been completely drained.
2. Make sure all piping connections have been made according to installation instructions.
3. Close all Air Maintenance Device valves. If multiple AMDs are used, ensure all valves are in closed position.



**NOTE:** AMD shown in closed position

4. Open the nitrogen cabinet.
5. Move the Nitrogen/Air Fill handle to the Air Fill position.
6. Close the Nitrogen Test Port Valve.
7. Ensure the ball valve installed (by contractor) at the nitrogen storage tank outlet is closed.

Auxiliary Air Fill Valve  
(Closed Position)



Nitrogen Test Port Valve  
(Closed Position)

Nitrogen/Air Fill Valve  
(Air Fill Position)

8. Power the nitrogen generator system ON. The Power On light should turn green.

9. The compressor will shut off at  $75\pm 3$  PSI nitrogen storage tank pressure.



10. Check all piping connections for leaks including inside the generator cabinet, as pre-plumbed piping may have loosened during shipping. Note that relieving valve will release air into the cabinet when generating nitrogen.

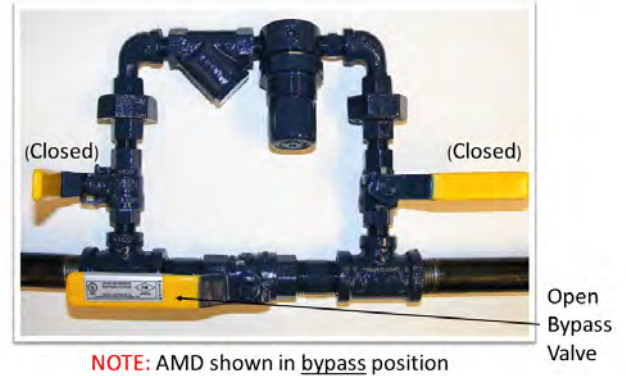
11. Using the installed ball valve at the bottom of the nitrogen storage tank, relieve the pressure until the air compressor turns ON. The air compressor should turn on at  $60\pm 3$  PSI. Close the ball valve.



12. The air compressor will run and turn off at  $75\pm 3$  PSI. If the unit takes longer than the prescribed time on page 28, or does not stop running when the unit reaches  $75\pm 3$  PSI, go to Troubleshooting Section.



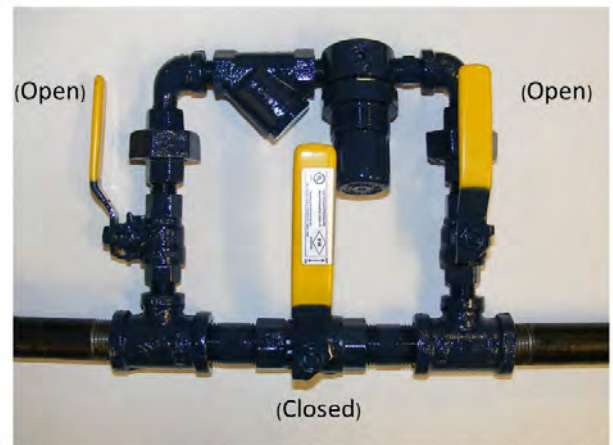
13. The nitrogen generator is now ready to fill the fire sprinkler system to the desired supervisory pressure.
14. Open the ball valve at the nitrogen storage tank outlet.
15. Enable auxiliary air compressor if installed by applying power to the compressor and opening Auxiliary Air Inlet Valve.



 **CAUTION**

If there is more than one AMD on the system, then close the others. Fill one system at a time.

16. Open the Air Maintenance Device bypass valve to begin filling the sprinkler system.
17. Allow the sprinkler system to reach the desired pressure.  
NOTE: This should finish in 30 minutes per the desired NFPA guidelines.
18. As soon as sprinkler system supervisory pressure is reached, put the sprinkler system back into service by placing the Air Maintenance Device in the maintenance position (refer to the air maintenance device manual for proper operation).



 **CAUTION**

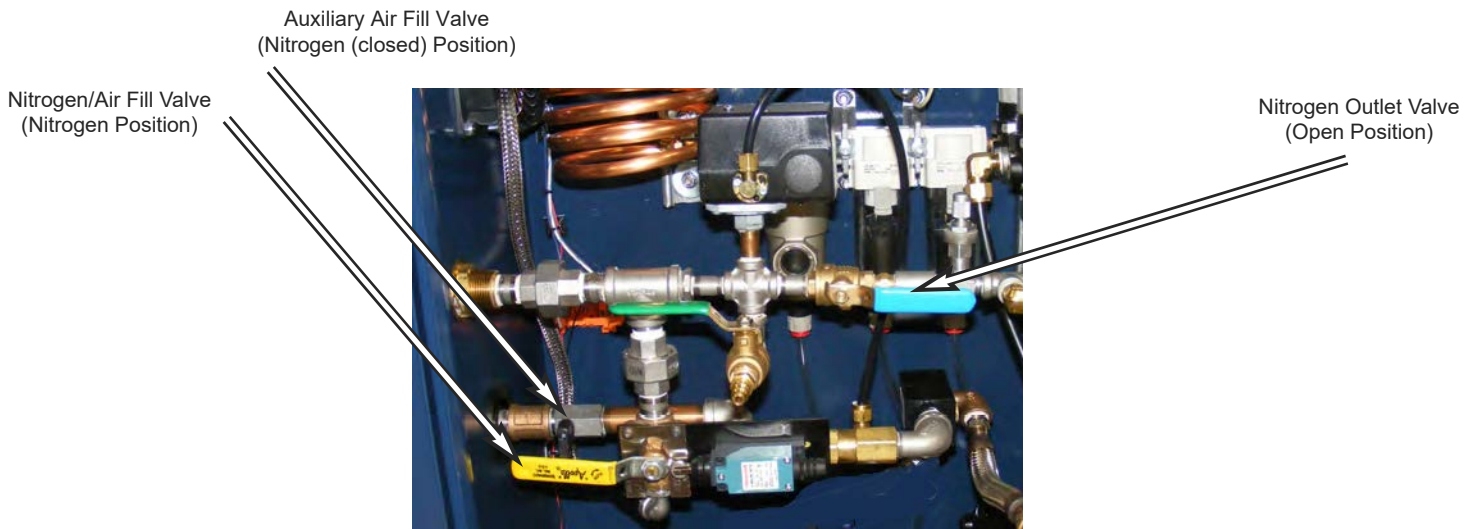
If there is more than one AMD on the system, fill EACH system individually and repeat steps 16 through 18



## Section 8 - Nitrogen Filling Procedure

---

1. Once the system is at the desired supervisory pressure, it is time to start injecting nitrogen.
2. Close the Auxiliary Air Inlet Valve.
3. Move the Nitrogen/Air Fill handle to the Nitrogen position.
4. Open the Nitrogen Outlet Valve.



Valve Handle Positions For Nitrogen Generation

4. Open the drain valve on the nitrogen storage tank and relieve the pressure until the compressor starts. The compressor should turn on at  $60 \pm 3$  PSI on the nitrogen tank pressure gauge.



5. The membrane pressure gauge should read between 95 and 100 PSI.
6. Record the time it takes for the nitrogen storage tank to reach 75 PSI. It should typically take 2 to 7 minutes. NOTE: The air compressor will run continuously during this process.



7. When the nitrogen storage tank pressure reaches  $75 \pm 3$  PSI, the compressor will turn OFF and the nitrogen membrane pressure will go to zero (0).

8. Repeat steps 4-7 a second time to ensure nitrogen storage tank fill up times are consistent.



9. On the second cycle, open the Nitrogen Test Port Valve located on the inside of the cabinet.

10. Turn on the Nitrogen Analyzer. For more information on the Nitrogen Analyzer go to Section 16.



11. Attach the Nitrogen Analyzer to the Nitrogen Test Port.

Nitrogen Test Port Valve (shown in closed position)

12. The nitrogen purity level reading should climb to 98%+. If not go to Troubleshooting.

13. Close the Nitrogen Test Port Valve and disconnect the Nitrogen Analyzer. Make sure to power off the Nitrogen Analyzer.



Nitrogen Analyzer (NGP-PSN2)

14. Do not leave the Nitrogen Test Port Valve open for more than 2 minutes. The purity level may drop and fill times will be lengthened. Note: the cabinet door will not shut completely with the Nitrogen Test Port Valve open.

15. The system is now in operation. For purging instructions see purge valve manual.

# Section 9 - Nitrogen Control Module

---

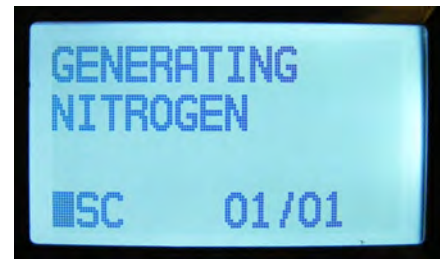
The Nitrogen Control Module is a built in PLC used to monitor the nitrogen generator and provide useful information on alarms, compressor operating hours and cycles.

Normal operation does not require any operator input. The display should read “WM300 Nitrogen Mode Standby when the compressor is off”, and Generating Nitrogen or Bypass Mode when the compressor is running unless the generator is in alarm or log display mode. To access the panel flip the casing up.

## PLC Operation

To view the log display information:

- Press the Alt Key and then Press the down arrow.  
Press the Alt Key again.
- Use the UP and DOWN arrow key to scroll through the log screens.
- To get out of the log press ALT then up arrow, and press ALT again to get to main display



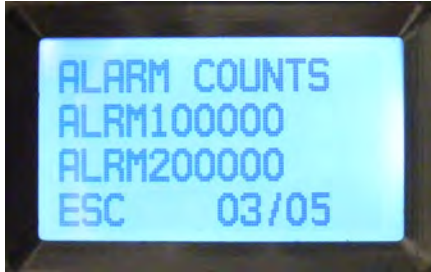
Modes Of Operation

## Log Screens

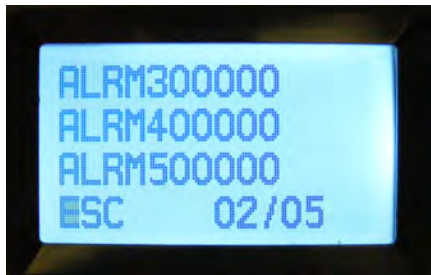
### Power Cycle Screen



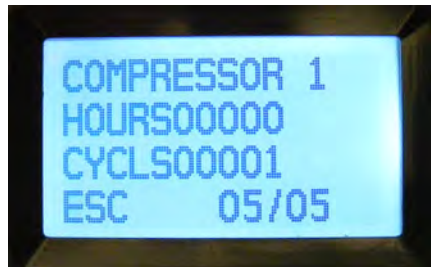
### Alarm 1 and 2 Counts Screen



### Alarm 3 and 4 Counts Screen\*



### Compressor 1 Hours and Cycles Screen



# Section 10 - Nitrogen Generator Alarms/Troubleshooting

The NGP-WM300 nitrogen generator has 4 alarms, the NGP-WM600 nitrogen generator has 5 alarms. If an alarm is activated, the alarm light will turn red on the outside of the cabinet and the Alarm Horn will sound. The alarm number will also display on the Nitrogen Control Module on the right side of the cabinet.

To clear alarms, cycle power or press ALT then hold the right arrow key for 5 seconds. Press ALT again to get back to main menu. To silence horn only, hold finger over hole on horn to silence. The horn will no longer sound until power is cycled, or the alarm is reset and triggered again.



## Alarm 1 – Excessive Air Compressor Run

**Issue:** The air compressor has run for longer than 1 hour continuously.

**Answer:**

1. Check the pressure in the nitrogen storage tank. If the pressure is greater than 75 PSI and the compressor is still running it could indicate a pressure switch issue.
2. Check the nitrogen generator system for leaks.

## Alarm 2 – Bypass Alarm

**Issue:** The nitrogen generator has been left in Bypass Mode (Air Fill) for over 45 minutes. This alarm clears when the unit has been placed in Nitrogen Mode. It is designed to prevent the unit from being inadvertently left in Air Fill Mode.

**Answer:**

1. Turn the Nitrogen/Air Fill Valve to the Nitrogen position. Open the Nitrogen Outlet Valve. Refer to Nitrogen Filling Procedure. Note: moving the valve handle resets Alarm 2 only.
2. If the unit is filling multiple systems, or being left intentionally in Air Fill Mode, mute the Alarm Horn by holding a finger over the hole on the horn to silence.

## Alarm 3 – Compressor Excess Cycles

**Issue:** Air compressor has cycled more than 150 times in 24 hours.

**Answer:**

1. The unit is running more frequently than normal. Check to ensure all valves in the cabinet are in correct position.
2. Check the nitrogen generator system for leaks.
3. Check the sprinkler system for leaks.



**Alarm 4 and 5 – Compressor Overload Issue:**

Compressor overload relay has tripped.

**Answer:**

1. Reset overload relay and check Amp draw.
2. Membrane pressure is too high - adjust relieving valve to 100 psi.
3. Low voltage at compressor, measure supply voltage in nitrogen cabinet while compressor is running. Increase feed wire gauge as required.
4. Check for mechanical binding in compressor with power off.

**Issue: The air compressor does not turn on.**

**Answer:**

1. Ensure the power disconnect switch is in the ON position and properly wired.
2. Check the pressure gauge on the nitrogen storage tank. (Note: The nitrogen generator system will not turn on unless the nitrogen pressure is below 60±3 PSI.)
3. Make sure all valves are open or closed where necessary.
4. Check for alarms. Reset OL1 as indicated by alarm display.

**Issue: The air compressor takes too long to fill.**

**Answer:**

1. Confirm all valves are in the correct position. When filling the sprinkler system ensure the Nitrogen/Air Fill Valve is in Air Fill position. Trying to fill the sprinkler system through the membrane will result in long fill times and possibly damage to the compressor. See Standard Air Filling Method for operation on how to fill the sprinkler system.
2. Check the nitrogen generator system for leaks.
3. Check the sprinkler system for leaks.

**Issue: Nitrogen membrane pressure is lower than 80 PSI (when the compressor is ON).**

**Answer:**

1. Ensure all the ball valves are in the correct position for Nitrogen Mode, go to Nitrogen Filling Procedure.
2. Adjust the needle valve on the inside of the cabinet to 98% nitrogen.  
*NOTE:* Nitrogen storage tank needs to be at 60±3 PSI when adjusting needle valve.
3. Check membrane pressure. It should be between 95 and 100 PSI.
4. Close Nitrogen Test Port Valve.
5. Check for leaks between the membrane inlet and compressor discharge.
6. Check compressor air filter.



NEEDLE VALVE



# Section 11 - Nitrogen Generator Leak Check Method

---

1. First isolate the nitrogen generator from the fire protection system, by closing the ball valve located on the outlet of the nitrogen storage tank. If no ball valve was installed, close the AMD valves installed between the sprinkler system and the nitrogen generator.
2. Record the time the nitrogen generator was isolated and the sprinkler system supervisory pressure. This will be used to determine if there is a leak on the sprinkler system side.
3. Power OFF the nitrogen generator.
4. In the cabinet, switch the Nitrogen/Air Fill Valve to the Air Fill position.
5. Close the Nitrogen Outlet Valve.
6. Close the Nitrogen Test Port Valve .
7. Exhaust all the gas by using the ball valve on the nitrogen storage tank.
8. Power ON the nitrogen generator. The Power On light on the outside of the cabinet should turn green.
9. Allow the pressure in the nitrogen storage tank to rise.
10. Once the air compressor has turned off, record the pressure on the nitrogen storage tank.
11. Let the nitrogen generator sit for 30 minutes. The air compressor should NOT turn on during this time.
12. Recheck the nitrogen storage tank pressures. The pressure should not change.
  - a. If there is a pressure drop the nitrogen generator has a leak. Soap the fittings or use a leak detector in the unit and re-tighten any fittings that are loose.
  - b. If there is no pressure drop, this indicates there is a leak on the sprinkler system side. Return to the sprinkler system to see if there has been a pressure drop on the system during troubleshooting. Fix sprinkler leaks before putting the nitrogen generator back into service.

## Section 12 - Nitrogen Membrane Check

---

1. First isolate the nitrogen generator from the fire protection system, by closing the ball valve located on the outlet of the nitrogen storage tank. If no ball valve was installed, close the AMD valves installed between the sprinkler system and the nitrogen generator.
2. Record the time the nitrogen generator was isolated and the sprinkler system supervisory pressure. This will be used to determine if there is a leak on the sprinkler system side.
3. Turn Nitrogen/Air Fill Valve to Nitrogen position.
4. Open the Nitrogen Outlet Valve.
5. Exhaust the gas in the nitrogen storage tank by using the ball valve on the bottom of the tank until the nitrogen storage pressure is  $60\pm 3$  PSI and the compressor turns ON.
6. Quickly close the ball valve.
7. Check the membrane pressure gauge, it should be between 95-100 PSI when the compressor is running.
8. Open the Nitrogen Test Port Valve.
9. Using a portable nitrogen analyzer check the nitrogen purity. The purity should read 98% or greater when the pressure in the nitrogen storage tank reads at least  $60\pm 3$  PSI.

## Section 13 - Sprinkler System Leak Check

---

If no leak could be found in the nitrogen generator and the unit reaches its desired pressures in the allotted time, this indicates the sprinkler system has a leak larger than the unit can handle in nitrogen generating mode. Isolate the fire sprinkler system and see if the pressure drops. Nitrogen generators are designed for 1.5 PSI leak over 24 hours per NFPA 13's new system leak rate, unless specified otherwise.

To keep system in service the unit can run in Air Fill Mode while arrangements are made to fix sprinkler system leaks.

## Section 14 - Maintenance



All pressure must be relieved from the entire nitrogen generator system BEFORE servicing. To avoid system damage and/or personal injury, the nitrogen generator should be isolated from the compressed air supply and the generator system fully depressurized before any maintenance or service is performed. All maintenance and troubleshooting activities for the Nitrogen Generator should be performed by qualified personnel using reasonable care. Before servicing, isolate all risers by closing all AMD valves and relieving all system pressure from the Nitrogen Generator. Failure to do so could result in serious injury or death.

The Nitrogen Generator features durable components and construction for long-lasting value, reliable performance, and require little maintenance.

Schedule Maintenance Table	
Part	Frequency
5 Micron & Coalescing Filters	Annually
Nitrogen Purity Analyzer	Sensor Battery as Required
Pressure Settings	Inspected Quarterly

Air Compressor Maintenance Schedule	
Weekly	<ul style="list-style-type: none"> <li>• Drain condensate from receiver and traps</li> <li>• Check for unusual noise or vibration</li> <li>• Clean air filters (only with non-petroleum based products)</li> <li>• Clean all external parts of the compressor and motor</li> </ul>
Monthly	<ul style="list-style-type: none"> <li>• Manually test safety relief valve</li> <li>• Inspect air system for leaks</li> <li>• Tighten fittings, nuts and screws as required</li> </ul>
Quarterly	<ul style="list-style-type: none"> <li>• Change Compressor Intake filter element</li> </ul>

Replacement Parts	
Part	Replacement Part Number
MAINTENANCE KIT - NGP-WM300	NGP-MK3
MAINTENANCE KIT - NGP-WM600	NGP-MK2
AIR MAINTENANCE DEVICE	AMD-1
NITROGEN ANALYZER	NGP-PSN2
SENSOR ELEMENT (R217P67 ONLY)	NGP-5340014
NGP-WM300 OIL-LESS COMPRESSOR INTAKE FILTER ELEMENT (1 PER COMP.)	TN-10248
NGP-WM600 OIL-LESS COMPRESSOR INTAKE FILTER ELEMENT (1 PER COMP.)	TN-10876
NGP-WM300 MEMBRANE - M1	NGP-M1
NGP-WM600 MEMBRANE - M2	NGP-M2A OR NGP-M2B

## Filter Replacement

To replace the filters in the generator cabinet:

1. Isolate the nitrogen generator and relieve pressure.  
Note: to release pressure in filters loosen one of the gray manual drain knobs on the bottom of the filter bowls.
2. Disconnect the power to the nitrogen generator.
3. Unscrew the bowl from the filter body by pushing the release lever down and twisting 1/8 turn. This can be done without disconnecting the drain line. The WM300 has a third stage filter with a bowl that unscrews from the housing (there is no release catch).
4. Remove the element by unscrewing the filter.
5. Clean the filter body and bowl with a clean rag.
6. Replace the filter elements using filters provided in the replacement kit.
7. Check for leaks.



Release pressure in filters before removing bowls.  
See step one above.

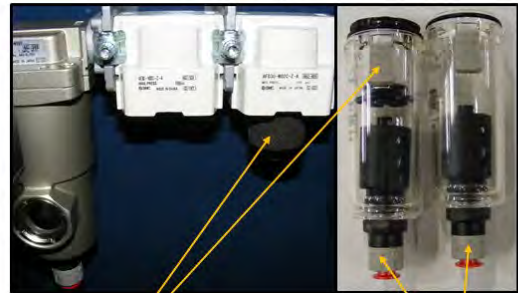
## Air Compressor Replacement

1. Isolate the nitrogen generator and relieve pressure.
2. Disconnect the power to the nitrogen generator.
3. Disconnect wires in junction box on the air compressor.
4. Loosen union on flex hose on compressor discharge.
5. Remove flex hose from compressor discharge.
6. Remove nuts holding compressor to rubber isolation mounts.
7. Lift and remove air compressor.
8. Install new air compressor.
9. Connect and verify wiring in motor junction box corresponds to the input voltage.
10. Power the generator.
11. Check for leaks.



Release lever

### NGP-WM300,600 FILTERS



Filter Element

Gray Manual Drain Knobs



NWP-WM300 3RD STAGE FILTER

## Section 15 - Normal Operating Parameters

---

The Nitrogen Generator System uses a single tank system design to deliver high purity nitrogen to the fire protection system. The pressure switch on the nitrogen storage tank controls the air compressor by turning it on and off at the desired pressure set points.

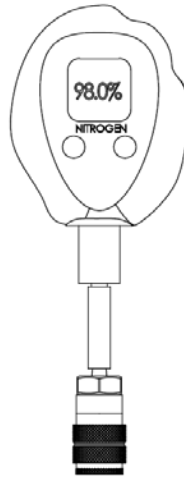
- Periodic (typically less than three times an hour) running of the air compressor is expected.
- When the compressor is not running, the membrane pressure gauge will read “0”.
- The float valves automatically release condensate from the unit when the float reaches the prescribed level.

NOTE: These are typical durations. Actual times may be slightly longer or shorter. These are typical pressure set points. Actual pressure can be  $\pm 3$  PSI.

Operational State	NGP-WM850/1100	Recorded Parameter
Air Compressor OFF (Nitrogen Tank Pressure)	75 PSI	
Air Compressor ON (Nitrogen Tank Pressure)	60 PSI	
Time Interval to build pressure from 60 PSI to 75 PSI in tank storage in Air Fill Mode	NGP-WM300: 40 seconds	
	NGP-WM600: 20 seconds	
Time Interval to build pressure from 60 PSI to 75 PSI in tank storage in Nitrogen Mode	NGP-WM300: 6 minutes	
	NGP-WM600: 3.5 minutes	

# NGP-PSN2 Nitrogen Analyzer Instructions

## NGP-PSN2 (R217P67)



NGP-PSN2

Component	Description
3 ½ Digit Display	The 3 ½ digit liquid crystal display (LCD) provides direct readout of nitrogen concentrations in the range of 0 - 105.0% (100.1% - 105.0% used for calibration determination purposes). The digits also display error codes and calibration codes as necessary.
Low Battery Indicator	The low battery indicator is located at the top of the display and is only activated when the voltage on the batteries is below a normal operating level.
% Symbol	The “%” sign is located to the right of the concentration number and is present during normal operation.
Calibration Symbol	The calibration symbol is located at the bottom of the display and is timed to activate when a calibration is necessary.
ON/OFF Key	This key is used to turn the device on or off.
Calibration Key	This key is used to calibrate the device. Holding the key for more than three seconds will force the device to enter a calibration mode

### Automatic Calibration - NGP-PSN2 (R217P67)

After the unit is turned on, it will automatically calibrate to room air. The display should be stable and reading 79.1%. To check the nitrogen concentration of a sample gas: (after the unit has been calibrated)

1. Connect the tubing to the bottom of the analyzer by threading the barbed adapter onto the oxygen sensor.
2. Attach the other end of the sample hose to the sample gas source and initiate flow of the sample to the unit at a rate of 1-10 liters per minute. 2 liters per minute is recommended.
3. Using the ON/OFF key, make sure the unit is in the power “ON” mode.
4. Allow the nitrogen reading to stabilize. This will take approximately 30 seconds or more.

## Calibrating the N2 Analyzer - NGP-PSN2 (R217P67)

Calibrate the N2 analyzer upon initial power-up. Thereafter, Maxtec® recommends calibration on a weekly basis. To serve as a reminder, a one week timer is started with each new calibration. At the end of one week a reminder icon appears on the bottom of the LCD. Calibration is recommended if the user is unsure when the last calibration procedure was performed, or if the measurement value is in question.

With compressed air (79.1% N2), new calibration is required when:

- The measured N2 percentage in 79.1% N2 is above 80.1% N2
- The measured N2 percentage in 79.1% N2 is below 78.1% N2
- The CAL reminder icon is blinking at the bottom of the LCD

A simple calibration may be made with the sensor open to static ambient air.

## Calibration Errors and Error Codes - NGP-PSN2 (R217P67)

The nitrogen purity analyzer has a self test feature built into the software to detect faulty calibrations, oxygen sensor failures, and low operating voltage. Refer to the following table for an explanation of error codes and possible actions to take.

Code	Meaning	Corrective Action
E02	No sensor attached	Open the hand held nitrogen purity analyzer and disconnect and reconnect sensor. Unit should perform an auto calibration and should read 79.1%. If not, contact Customer Service for possible sensor replacement.
E02	No valid calibration data available	Make sure unit has reached thermal equilibrium. Press and hold the Calibration Button for three seconds to manually force a new calibration.
E02 or ED4	Battery below minimum operating voltage	Replace batteries.
CAL Err St: O2	Sensor reading not stable	Wait for displayed nitrogen reading to stabilize, when calibrating the device at 100% oxygen. Wait for unit to reach thermal equilibrium (Please note that this can take up to one half hour, if the device is stored in temperatures outside the specified operating temperature range).
CAL Err lo	Sensor voltage too low	Press and hold the Calibration Button for three seconds to manually force a new calibration. If unit repeats this error more than three times, contact Customer Service for possible sensor replacement.
CAL Err hi	Sensor voltage too high	Press and hold the Calibration Button for three seconds to manually force a new calibration. If unit repeats this error more than three times, contact Customer Service for possible sensor replacement.
CAL Err Bat	Battery voltage too low to recalibrate	Replace batteries.



## Changing the Batteries - NGP-PSN2 (R217P67)

When the batteries need to be changed, the device will indicate this in one of two ways:

1. The battery icon on the bottom of the display will begin to flash. This icon will continue to flash until the batteries are changed. The unit will continue to function normally for approx. 200 hours.
2. If the device detects a very low battery level, an error code of "E04" will be present on the display, and the unit will not function until the batteries are changed.

To change the batteries, begin by removing the three screws from the back of the device. A #1 phillips screwdriver is required to remove these screws. Once the screws are removed, gently separate the two halves of the device. The batteries can now be replaced from the back half of the case. Be sure to orient the new batteries as indicated in the embossed polarity on the back case. *NOTE:* If the batteries are installed incorrectly the batteries will not make contact and the device will not operate. Carefully, bring the two halves of the case together while positioning the wires so they are not pinched between the two case halves. The gasket separating the halves will be captured on the back case half. Reinsert the three screws and tighten until the screws are snug. The device will automatically perform a calibration and begin displaying % of oxygen.

*HELPFUL HINT:* If unit does not function, verify that the screws are tight to allow proper electrical connection.

## Changing the Oxygen Sensor - NGP-PSN2 (R217P67)

Should the oxygen sensor require changing, the device will indicate this by presenting "Cal Err lo" on the display after initiating a calibration.

To change the oxygen sensor, begin by removing the three screws from the back of the device. A #1 Phillips screwdriver is required to remove these screws. Once the screws are removed, gently separate the two halves of the device. Disconnect the oxygen sensor from the printed circuit board by pressing the unlock lever first and then pull the connector out of the receptacle. The oxygen sensor can now be replaced in the back half of the case.

*HELPFUL HINT:* Be sure to orient the new sensor by aligning the red arrow on the sensor with the arrow in the back case.

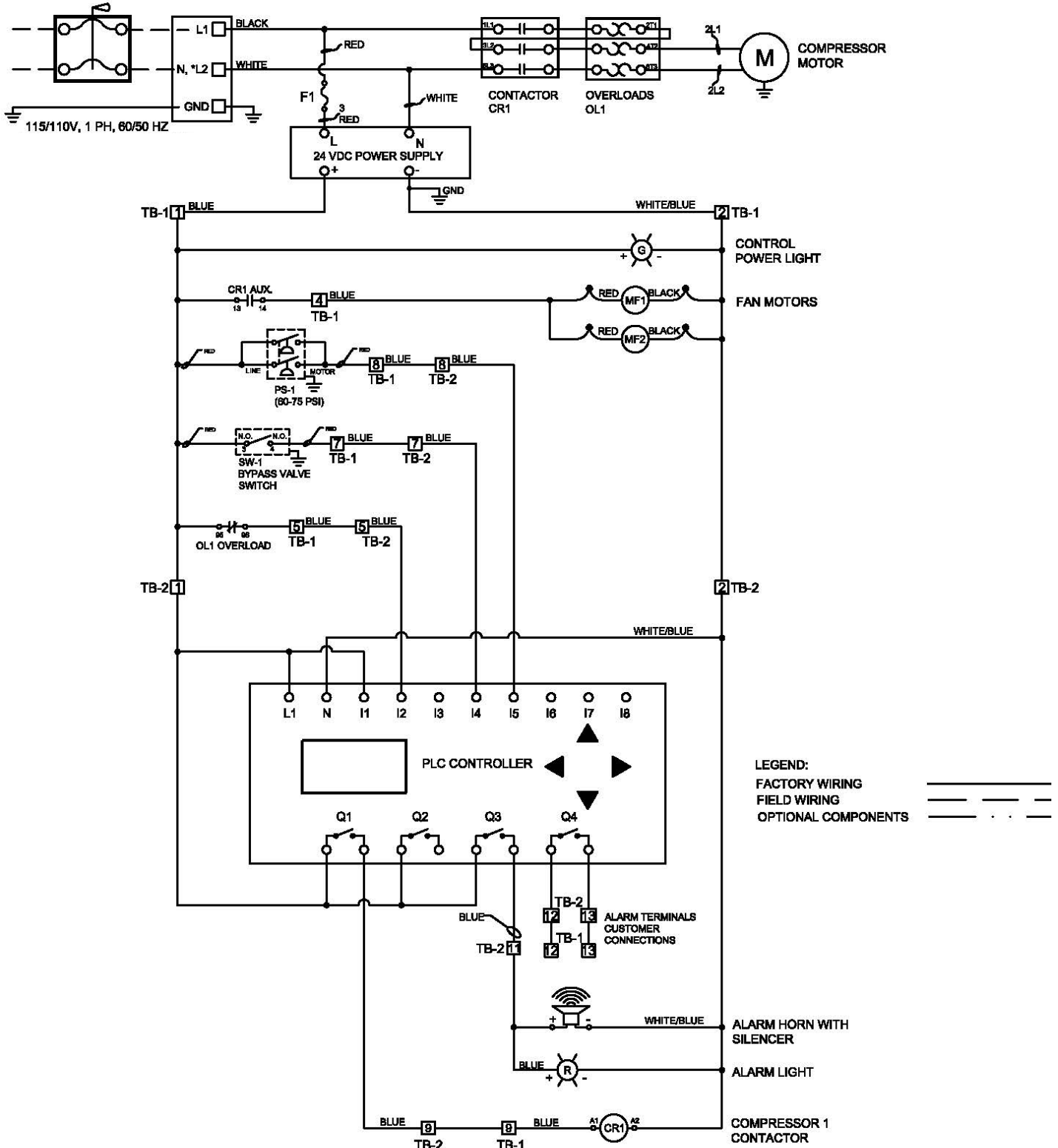
A small tab is located on the back case that is designed to engage the sensor and prevent it from rotating within the case.

*NOTE:* If the oxygen sensor is installed incorrectly, the case will not come back together and the unit may be damaged when the screws are reinstalled. Reconnect the oxygen sensor to the connector on the printed circuit board. Carefully bring the two halves of the case together while positioning the wires to ensure they are not pinched between the two case halves. Make sure the sensor is fully inserted and in the proper orientation. Reinsert the three screws and tighten until the screws are snug. Verify the unit operates properly. The device will automatically perform a calibration and begin displaying % of oxygen.

# Section 17 - Wiring Diagrams

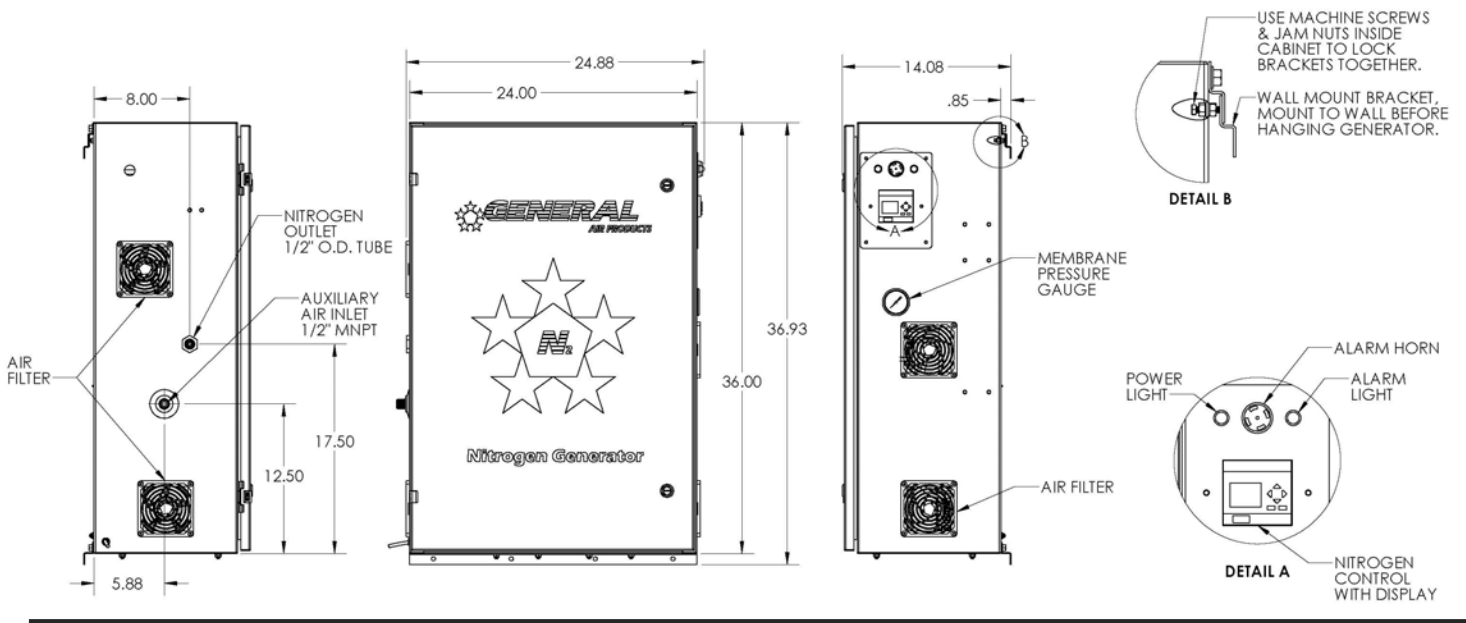
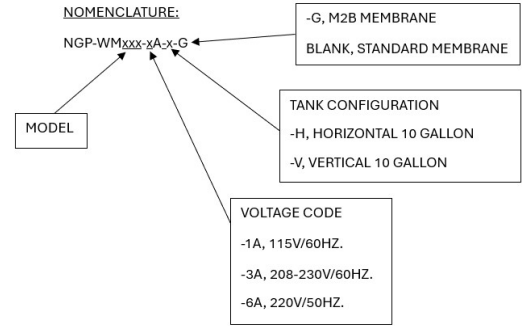
## NGP-WM300,600 Wiring Diagram

DISCONNECT SWITCH, BRANCH CIRCUIT PROTECTION AND/OR OVERLOAD RELAY TO BE PROVIDED BY INSTALLER (SEE MANUAL FOR SIZING)

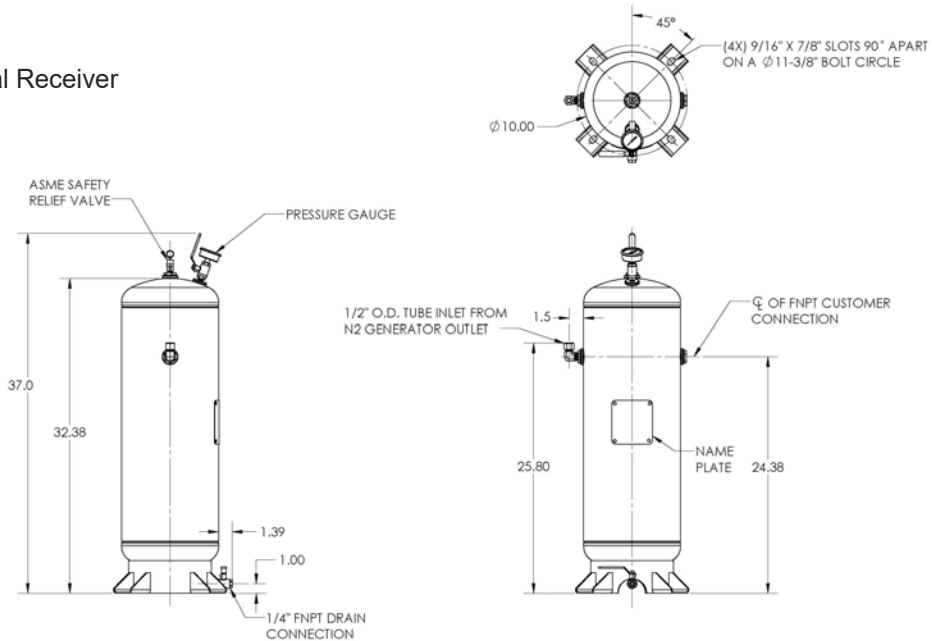


# Section 18 - Technical Specifications and Drawings

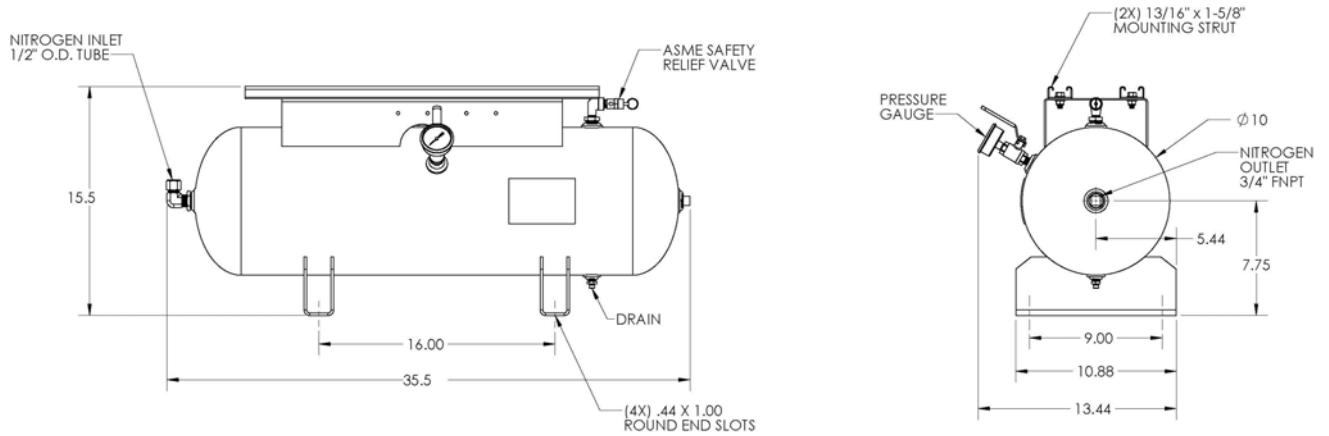
Weight WM300/600	135/155 lbs
System Connection	1/2" Female NPT (on nitrogen tank)
Power Supply	Available in 115V or 230V 60 hz, and 220V 50 hz.
Outlet Pressure	60-75 PSI
Temperature Range	50°F (10°C) to 110°F (43°C)



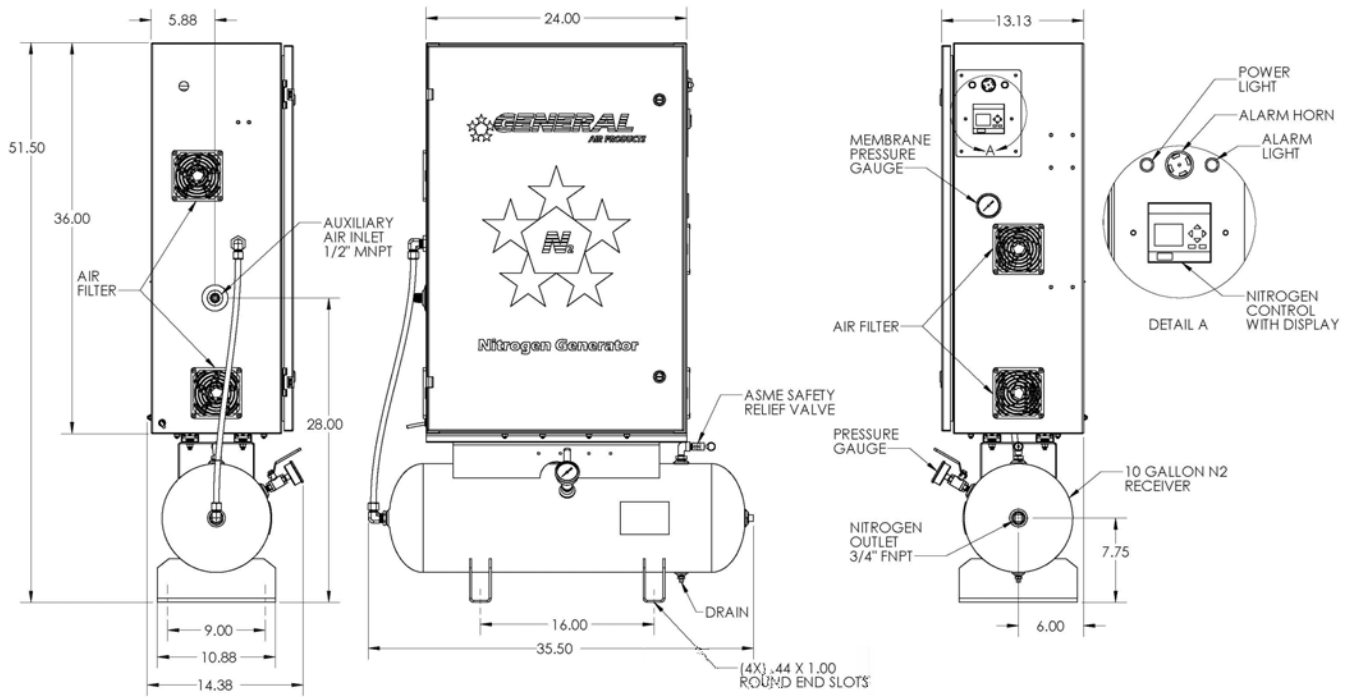
10 Gallon Vertical Receiver  
Weight: 40 lbs.



10 Gallon Horizontal Receiver Weight: 50 lbs.



Generator may be mounted to horizontal tank or floor using the supplied mounting struts



# Section 19 - Warranty Policy

---

## GENERAL PROVISIONS & LIMITATIONS

General Air Products, Inc. (the "Company") warrants to each original purchaser ("Purchaser") of its new products from the Company or its Authorized Distributor that such products are, at the time of delivery to the Purchaser, made with good materials and workmanship. No warranty is made with respect to:

1. Any product, which has been repaired or altered in such a way, in the Companies judgment, as to affect the product adversely.
2. Any product, which has, in the Companies judgment been subjected to negligence, accident, improper storage, improper installation or application.
3. Any product, which has not been operated or maintained in accordance with the recommendations of the Company.
4. Components or accessories manufactured, warranted and serviced by others.
5. Any reconditioned or prior owned product.

Claims for items described in 4. above should be submitted directly to the manufacturer of the component or accessory.

## WARRANTY PERIOD

The Company's obligation under this Warranty is limited to repair or, at its option, replacing during normal business hours at the designated facility of the Company, any part that in its sole judgment proved not to be as warranted within the applicable Warranty Period as follows.

## COMPONENTS

All non-consumable components are warranted for 12 months from the date of purchase or 18 months from date of manufacture, which ever occurs first. Consumables are not covered under warranty. The unit must have been installed by either a factory authorized distributor or agent in accordance with the factory recommendations taking into account all other local site conditions not originally noted to the factory. The unit must be operated and maintained in accordance with the Factory recommendations and original design conditions. Failure to provide such proof of the above may void warranty.

## LABOR TRANSPORTATION & INSPECTION

The Company will repair or replace any product or part thereof which in the Company's sole judgement is defective in material or workmanship. Labor costs are not covered under warranty.

All costs of transportation of product, labor or parts claimed not to be as warranted and, of repaired or replaced parts to or from factory shall be borne by purchaser. The Company may require the return of any part claimed not to be as warranted to one of its facilities as designated by the Company, transportation prepaid by Purchaser, to establish a claim under this warranty.

Replacement parts provided under the terms of the warranty are warranted for the remainder of the Warranty Period of the product upon which installed to the same extent as if such parts were original components, or for 90 days whichever is longer.

## DISCLAIMER

THE FOREGOING WARRANTY IS EXCLUSIVE AND IT IS EXPRESSLY AGREED THAT, EXCEPT AS TO TITLE, THE COMPANY MAKES NO OTHER WARRANTIES, EXPRESSED OR IMPLIED OR STATUTORY, INCLUDING ANY IMPLIED WARRANTY OR MERCHANTABILITY.

THE REMEDY PROVIDED UNDER THIS WARRANTY SHALL BE THE SOLE, EXCLUSIVE AND ONLY REMEDY AVAILABLE TO THE PURCHASER AND IN NO CASE SHALL THE COMPANY BE SUBJECT TO ANY OTHER OBLIGATIONS OR LIABILITIES. UNDER NO CIRCUMSTANCES SHALL THE COMPANY BE LIABLE FOR SPECIAL, INDIRECT, INCIDENTAL OR CONSEQUENTIAL DAMAGES, EXPENSES, LOSSES OR DELAYS HOWSOEVER CAUSED.

No statement, representation, agreement, or understanding, oral or written, made by any agent, distributor, representative or employee of the Company which is not contained in this Warranty will be binding upon the company unless made in writing and executed by an officer of the Company.

This warranty shall not be effective as to any claim which is not presented within 30 days after the date upon which the product is claimed not to have been as warranted. Any action for breach of this warranty must be commenced within one year after the date upon which the cause of action occurred.

Any adjustment made pursuant to this warranty shall not be construed as an admission by the Company that any product was not as warranted.

## PROMPT DISPOSITION & RETURNS POLICY

The Company will make a good faith effort for prompt correction or other adjustment with respect to any product, which proves to be defective within the warranty period. Before returning any product, write or call the distributor, agent or authorized company from which the product was purchased, describing defect and giving date and number of original invoice, a well as proof of Factory supplied consumables and proof of scheduled maintenance. No products will be accepted for return without the Company issuing a "Returned Goods Authorization" (RGA) to the Purchaser and unless accompanied by a properly authorized RGA request form initiated by the Purchaser. Return freight must be prepaid and each returned product must have the RGA number clearly marked on the product. Title and risk of loss pass to buyer upon delivery to the common carrier.

## PRODUCT SUITABILITY

Many States, Localities and Countries have codes and regulations governing sales, construction, installation, and/or use of products for certain purposes, which may vary from those in neighboring areas. While General Air Products, Inc. attempts to assure that its products comply with such codes, it cannot guarantee compliance, and cannot be responsible for how the product is installed or used. Before purchase and use of a product, please review the product application, and national and local codes and regulations, and be sure that the product, installation, and use will comply with them.

### **General Air Products, Inc.**

118 Summit Drive  
Exton, PA 19341  
P: 610-524-8950  
F: 610-524-8965